

BE INSPIRED



Where is Bellingham?

The City of Bellingham is located in Washington State's northwest corner – just 90 miles north of Seattle and 55 miles south of Vancouver, British Columbia. As Whatcom County's largest city and county seat, Bellingham provides an urban vibe in an otherwise predominantly rural environment.



Mount Baker

This 10,781 foot slumbering volcano dominates the southeastern horizon. A record holder for most snowfall and longest ski season, Mt. Baker transforms seamlessly with the seasons to offer year around, world-class recreation options.

Salish Sea

Whatcom County's western border encompasses over 130 miles of meandering marine shoreline. Part of the Salish Sea, an intricate network of coastal waterways shared by the United States and Canada, this is one of the world's largest and most biologically rich inland seas.

Canadian Border

Whatcom County shares an international border with British Columbia, Canada. Travelers may access border crossings at Blaine (2), Lynden, Point Roberts and Sumas. Visit bellingham.org/transportation for restrictions and current wait times.



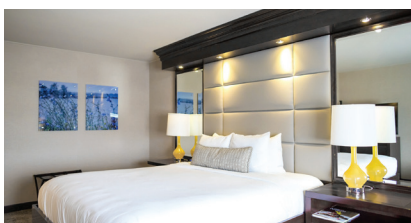
Semiahmoo Resort Golf Spa A seaside escape north of Seattle providing a Pacific Northwest experience. Over 35,000 sq. ft. of meeting space and 196 newly updated guest rooms, many with spectacular water views and in-room fireplaces. Enjoy our: health club, indoor/outdoor pool, 2 tennis courts, racquetball, beach volleyball, wellness center and salon, beach bonfires, onsite kayaking, whale watching tours, and more.

9565 Semiahmoo Parkway • Blaine, WA 98230 • 360-318-2000 • semiahmoo.com



Holiday Inn & Suites Bellingham Airport Conveniently located across from Bellingham International Airport, our hotel has easy access to all of Whatcom County. Located just off I-5, enjoy one of our 153 brand-new lodging rooms, 7800 sq. ft. of meeting space, and northwater, a full-service restaurant with daily happy hours, and Sunday brunch with bottomless mimosas.

4620 Mitchell Way • Bellingham, WA 98226 • 360-746-6844 • ihg.com



Silver Reef Casino Resort The premier resort destination in Northwest Washington, Silver Reef features over 200 luxury hotel rooms and suites plus a full-service spa and Loomis Trail Golf. Over 1,100 slot machines, 17 table games, 30,000 sq. ft. of event space, live entertainment, and 11 award-winning restaurants and bars. I-5 • Exit 260.

4876 Haxton Way • Ferndale, WA 98248 • 360-383-0777 • silverreefcasino.com



Four Points by Sheraton Hotel & Conference Center Award winning Marriott property and Bellingham's premier full-service hotel & convention center! Located in the heart of downtown. Featuring 132 rooms & suites, indoor heated pool, two restaurants & 11,000 sq. ft. of flexible meeting space. Indulge in a craft cocktail on our heated patio and grab a bite from our menu featuring Pacific Northwest flavors.

714 Lakeway Drive • Bellingham, WA 98229 • 360-671-1011 • fourpointsbelllingham.com



Marriott SpringHill Suites Discover a hotel infused with smart and stylish design, offering a seamless blend of comfort and functionality. Enjoy areas to work, relax and connect in our spacious suites approximately 25% larger than your standard hotel room. Complimentary hot breakfast buffet and Lobby Bar available. 1,760 sq. ft. of natural lit event space with floor to ceiling windows overlooking a greenbelt.

4040 Northwest Ave. • Bellingham, WA 98226 • 360-714-9600 • springhillbelllingham.com



Hotel Leo The historic Leopold Hotel building in downtown Bellingham features 40-room boutique hotel rooms. Completely reinvented with modern furniture, new tiled bathrooms and thoughtful details to make your stay enjoyable. The Rose Room ballroom seats up to 380 theater style, and up to 275 with rounds. The perfect location, Hotel Leo offers a home base in the center of downtown, overlooking Bellingham Bay.

1224 Cornwall Avenue • Bellingham, WA 98225 • 360-739-0250 • thehotelleo.com



Best Western Plus Bellingham Airport All rooms have been fully updated. Fully renovated 24-hour fitness center, complimentary full hot breakfast and more. Two executive meeting rooms can accommodate small groups up to 20. Adjacent to the hotel, Fox Hall has 3,700 sq. ft. of meeting space, and seats up to 200 for dinner and 250 theater style. AV and outside catering available.

3985 Bennett Drive • Bellingham, WA 98225 • 360-676-7700 • bestwestern.com

belllingham.org

Visit Bellingham

904 Potter Street | Bellingham, WA 98225
360-671-3990 | tourism@belllingham.org